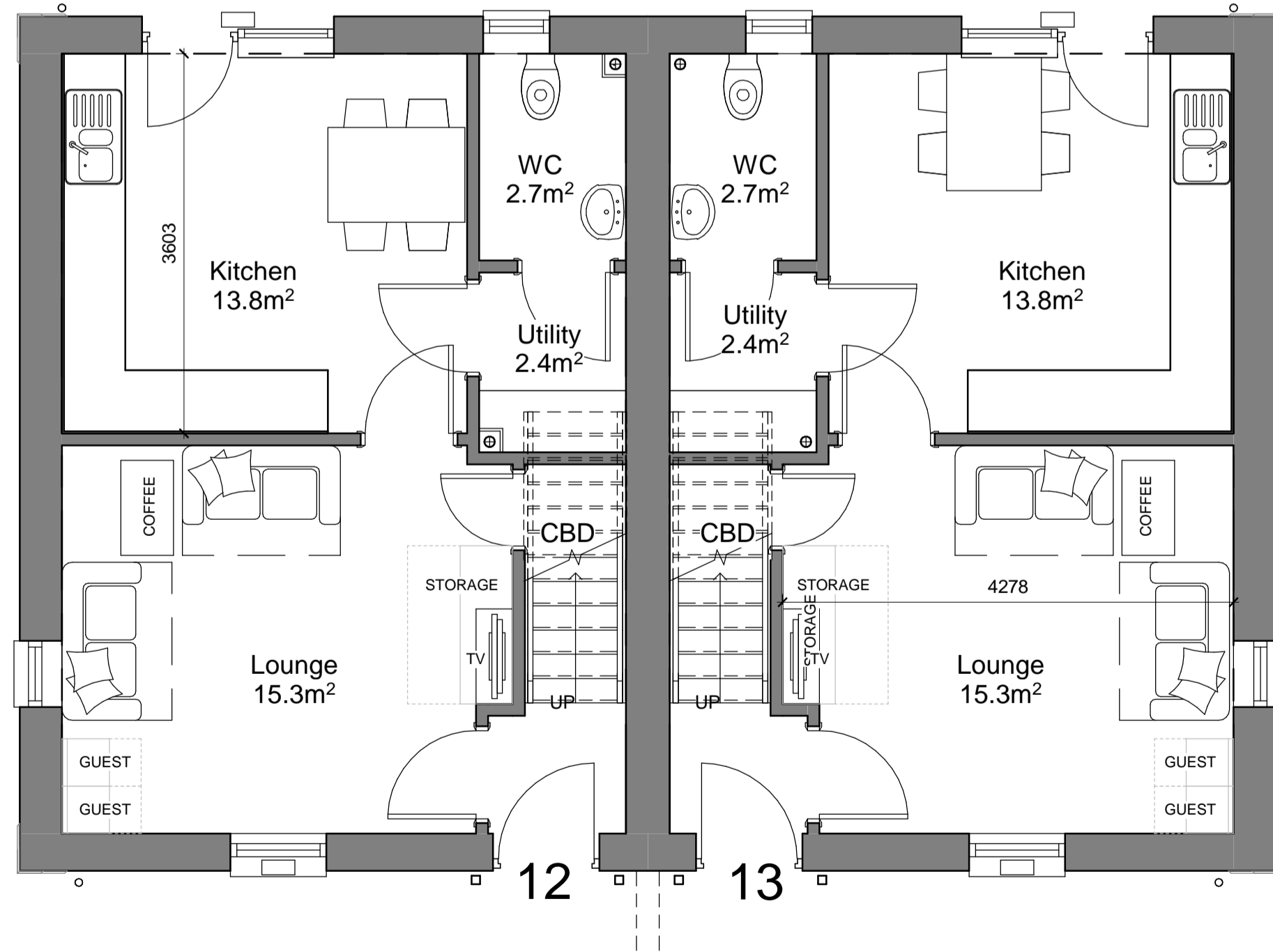


First Floor Plan

1 : 50 0 1m



Ground Floor Plan

1 : 50 0 1m



Front Elevation

1 : 100 0 2m



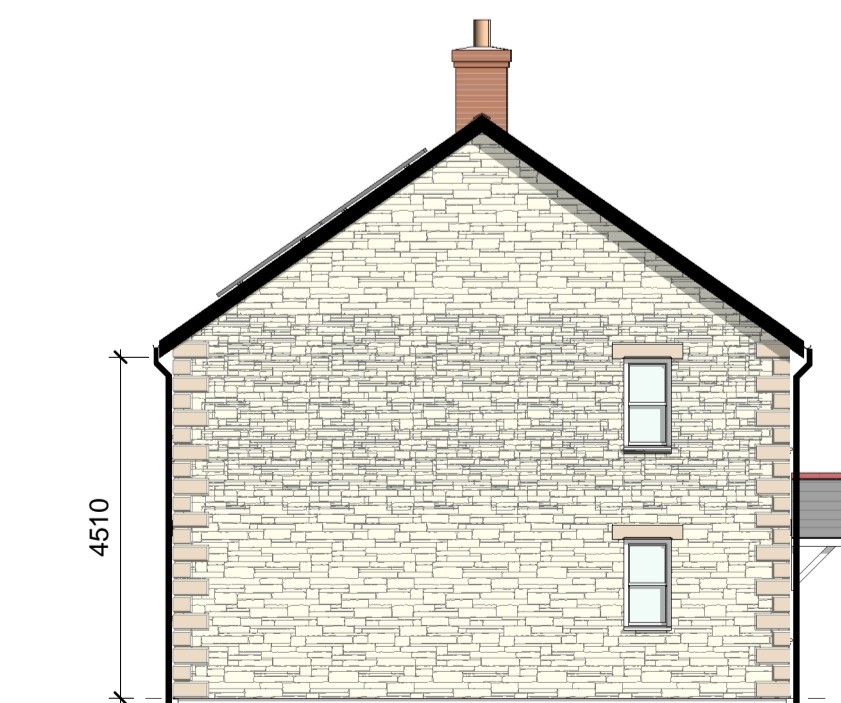
End Elevation

1 : 100 0 2m



Rear Elevation

1 : 100 0 2m



Side Elevation

1 : 100 0 2m

# TREWIN DESIGN ARCHITECTS

1 Stanhope Square Holsworthy Devon EX22 6DR - 01409253013  
www.trewin-design.co.uk - create@trewin-design.co.uk

## MATERIAL NOTES

- NATURAL BLUE BLACK SLATE ROOF
- TERRACOTTA RIDGE
- MULTISTOCK BRICK WALLS
- STONE GABLE WALLS WITH STONE EFFECT QUIONS
- STONE EFFECT BRICK LINTOLS
- WHITE UPVC WINDOWS ON SLATE CILLS
- BLACK UPVC GUTTERS AND DOWNPIPES
- BLACK FASCIAS AND SOFFITS

## Floor Area (GIFA)

Plot 12 - 79.18m<sup>2</sup>  
Plot 13 - 79.18m<sup>2</sup>

Drawing title  
Proposed Floor Plans and Elevations Plots 12 - 13

Job title  
Proposed Affordable Housing Development  
Netherhay Lane,  
DRIMPTON

Client  
Boardwindsor CLT

Stage	As indicated	Drawing number	7446 10-009
Scale @ A1	As indicated	Date	14-02-18
Date	14-02-18	Revision	E
Drawn by	BPS	Checked by	MSP

Revision	Description	Date	Initials
A	Comments from meeting 20.02.18	14.03.18	BPS
B	Comments from meeting 20.03.18	22.03.18	BPS
C	Material Colours	27.03.18	BPS
D	WC and Utility swapped and built in wardrobes added	19.10.18	BPS
E	Planning Issue	24.04.19	BPS

Contractors must check all dimensions on site before fabrication. Only figured dimensions are to be worked from. All discrepancies must be reported to Trewin Design Architects Ltd before proceeding. Copyright 2013 All rights reserved.