

Wessex Community Land Trust Project

Summer Update 2020

Unstoppable Communities!

Despite lockdown restrictions, CLTs supported by the Wessex CLT Project have adapted their working practices and made great progress with their community housing projects. In the past few months, five of the trusts have even reached exciting start-on-site and planning milestones:

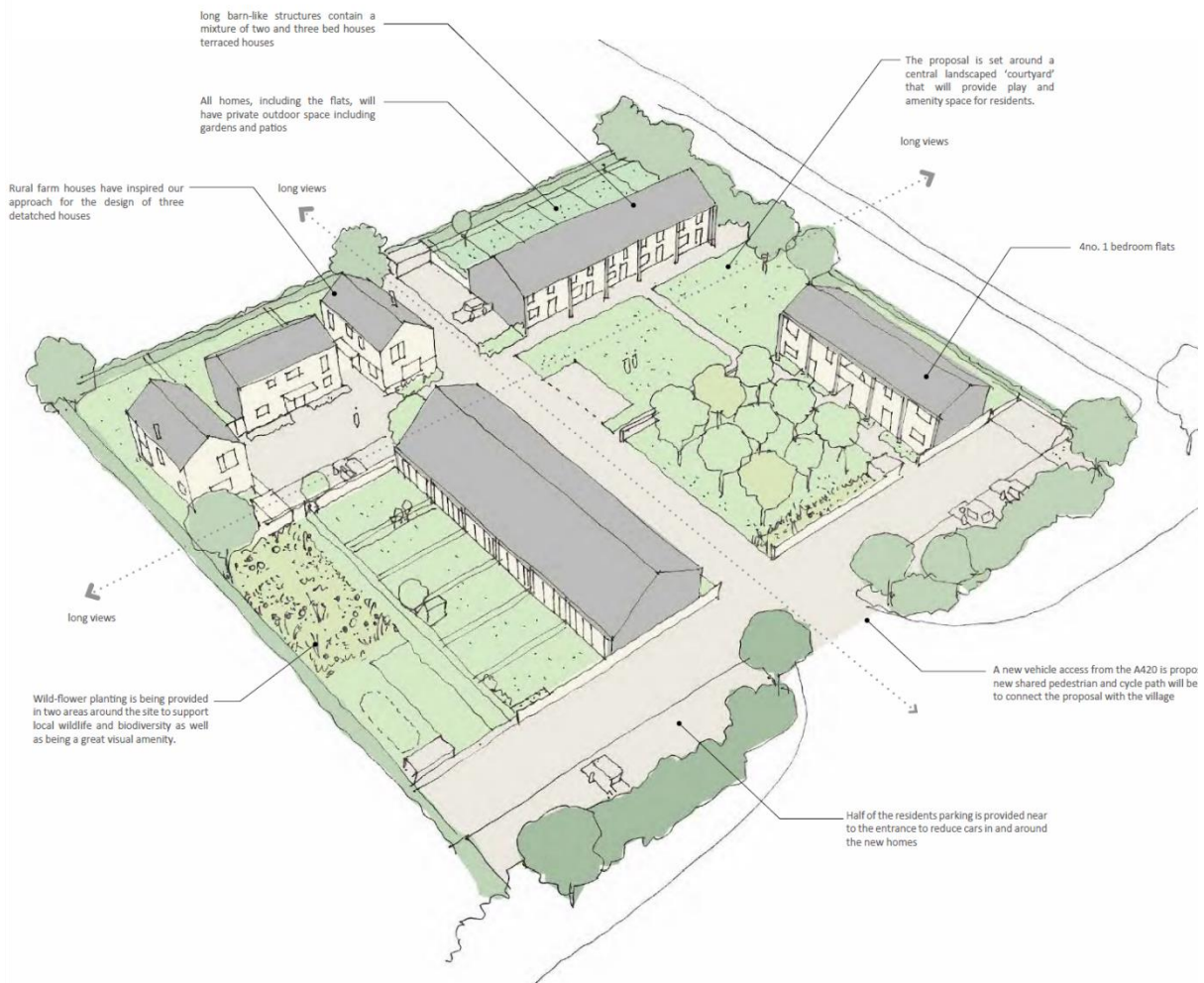
Start-on-site for Bishops Caundle CLT and Aster Group

This project for 6 affordable homes (as part of a larger market-led project of 19 homes) has started on site. The project includes the conversion of Grade 2 listed barns.



Planning consent for Marshfield CLT and United Communities HA

Consent has been granted (subject to a Section 106 Agreement) under delegated authority for a project of 12 affordable and 6 open market homes (including 3 self-builds) on a Rural Exception Site in the Avon Green Belt and Cotswold AoNB. The homes will be built to passivhaus principles.



Planning consent for Broadwindsor Group Parish CLT and Yarlington Housing Group

Consent has been granted (subject to a Section 106 Agreement) unanimously by Dorset Council's planning committee for a project of 15 affordable homes in the Dorset AONB and in accordance with the adopted Neighbourhood Plan. An annual saving in CO₂ of 20.42% is estimated compared to the building regulations compliant baseline.

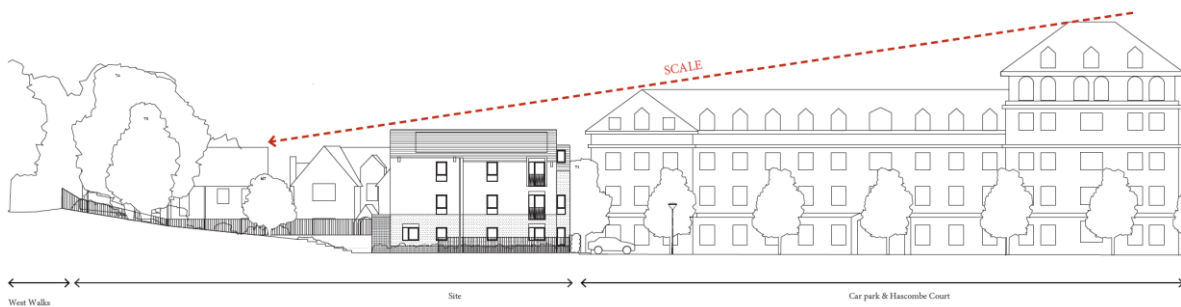


Members of the board gathered in the village hall to watch and then celebrate the deliberations of the planning committee – all socially distanced of course.



A full planning application by Dorchester Area CLT and Places for People

A full application has been submitted for a project of 15 affordable homes in Dorchester town centre, adjacent to the Scheduled Monument of the Old Roman Wall. If granted consent, the homes will be built to passivhaus principles.



A full planning application by Upper Coly Valley CLT and Teign Housing

A full application has been submitted for a project of 6 affordable homes on a Rural Exception Site in the East Devon AONB.

A typically challenging site includes piled foundations, a new sewage treatment plant and a long run of off-site surface water drainage.



Many thanks to Dorset Council, East Devon District Council and Homes England for their support with Community Housing Fund grant for these projects.

Also aiming to make planning applications in 2020/21 are: Corfe Castle CLT, Salcombe CLT, Chawleigh CT and Hartland Parish CLT (all with Aster Group), Yarcombe Parish CLT and Newton & Noss CLT (both with Teign Housing), Pill & District CLT (with Alliance Homes), Sixpenny Handley CLT (with White Horse HA), Creekmoor CLT (with Bournemouth Churches HA) and Frome Area CLT (partner to be selected).

Steve Watson, Alison Ward and Jay Lambe
Advisers to the Wessex Community Land Trust Project
August 2020

If you wish to subscribe to or unsubscribe from these updates about the Wessex CLT Project, please let us know:

steve.watson@wessexca.co.uk; alison.ward@wessexca.co.uk; jay.lambe@wessexca.co.uk.