

TREWIN DESIGN ARCHITECTS

1 Stanhope Square Holsworthy Devon EX22 6DR - 01409253013
www.trewin-design.co.uk - create@trewin-design.co.uk

MATERIAL NOTES

NATURAL BLUE BLACK SLATE

BLUE/BLACK RIDGE TILES

MULTISTOCK BRICK WALLS WITH STONE
EFFECT QUIONS AND STONE WALLS

STONE EFFECT LINTOLS

WHITE UPVC WINDOWS ON SLATE CILLS

BLACK UPVC GUTTERS AND DOWNPIPES

BLACK FASCIAS AND SOFFITS

Floor Area (GIFA)

Plot 10 - 93.8m²

Plot 11 - 110.26m²

Drawing title
Proposed Floor Plans and Elevations Plots
10 - 11

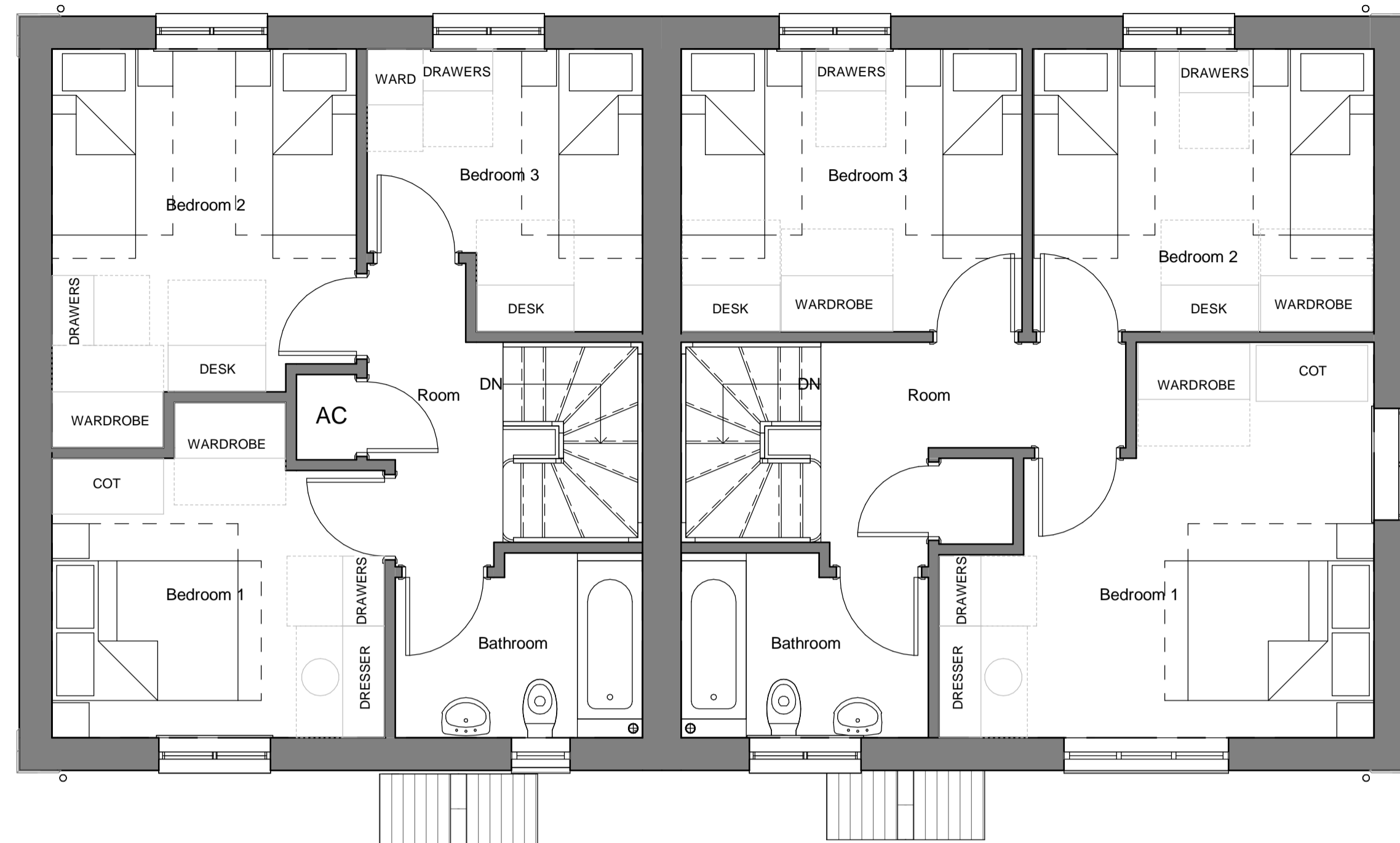
Job title
Proposed Affordable Housing Development
Netherhay Lane
DRIMPTON

Client
Broadwindsor CLT

Stage		Drawing number	7446 10-008
Scale @ A1	As indicated	Revision	C
Date	14-02-18	Checked by	MSP
Drawn by	RH		

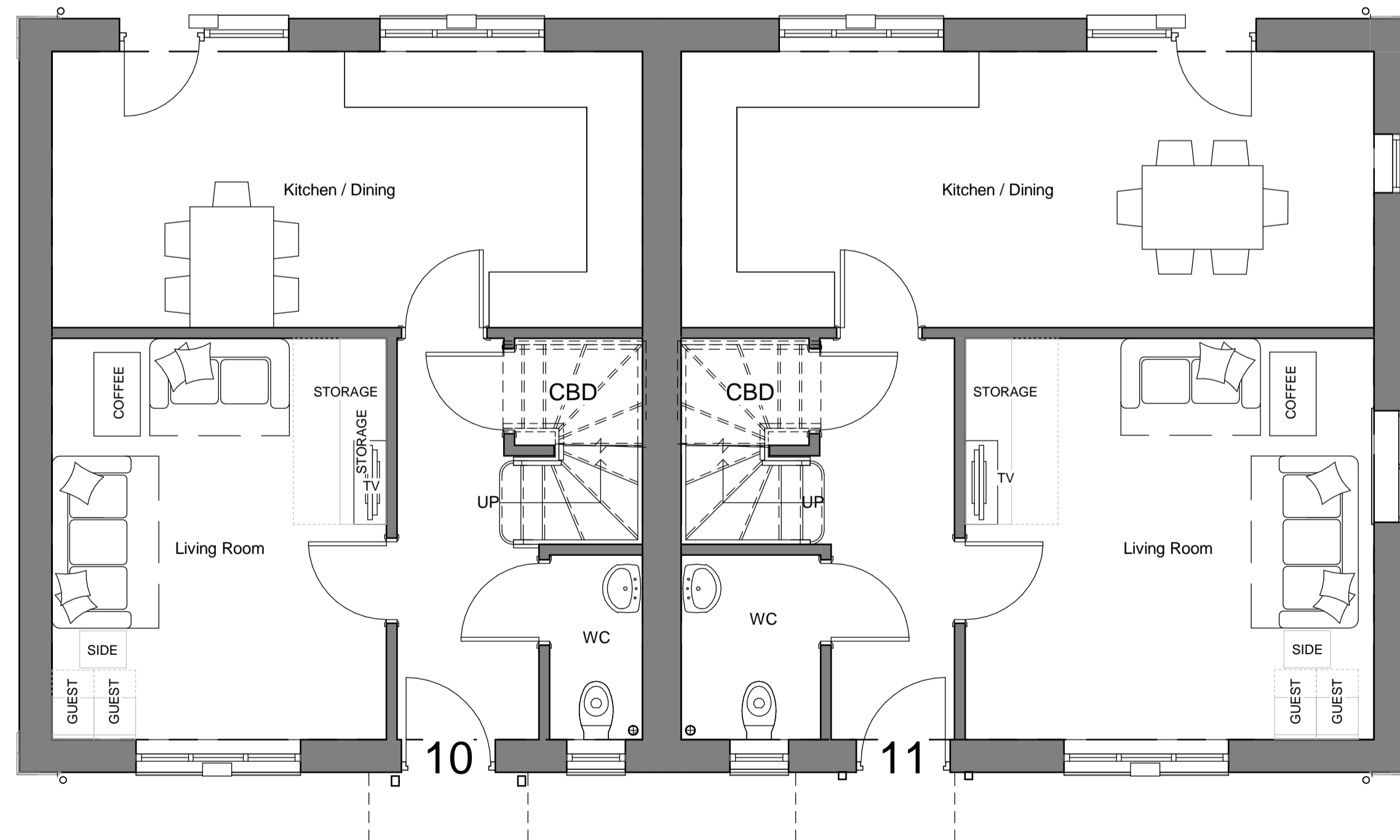
Revision	Description	Date	Initials
A	Comments from meeting 20.02.18	14.03.18	BPS
B	Comments from meeting 20.03.18	22.03.18	BPS
C	Material Colours	27.03.18	BPS

Contractors must check all dimensions on site before fabrication. Only figured dimensions are to be worked from.
All discrepancies must be reported to Trewin Design Architects Ltd before proceeding.
Copyright 2013 All rights reserved.



First Floor Plan

1 : 50



Ground Floor Plan

1 : 50



Front Elevation

1 : 100



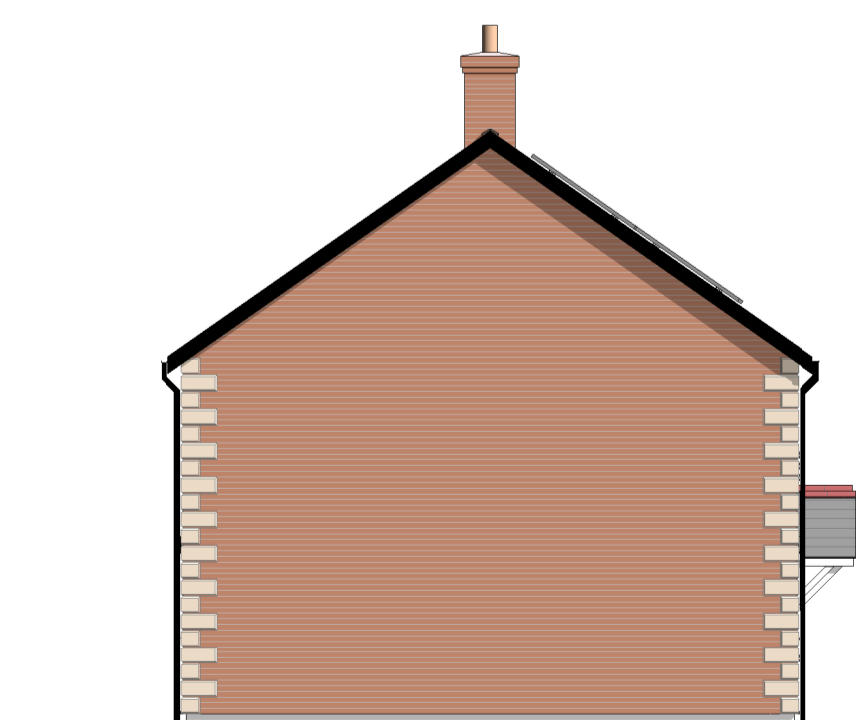
End Elevation

1 : 100



Rear Elevation

1 : 100



Side Elevation

1 : 100