

# TREWIN DESIGN ARCHITECTS

1 Stanhope Square Holsworthy Devon EX22 6DR - 01409253013  
www.trewin-design.co.uk - create@trewin-design.co.uk

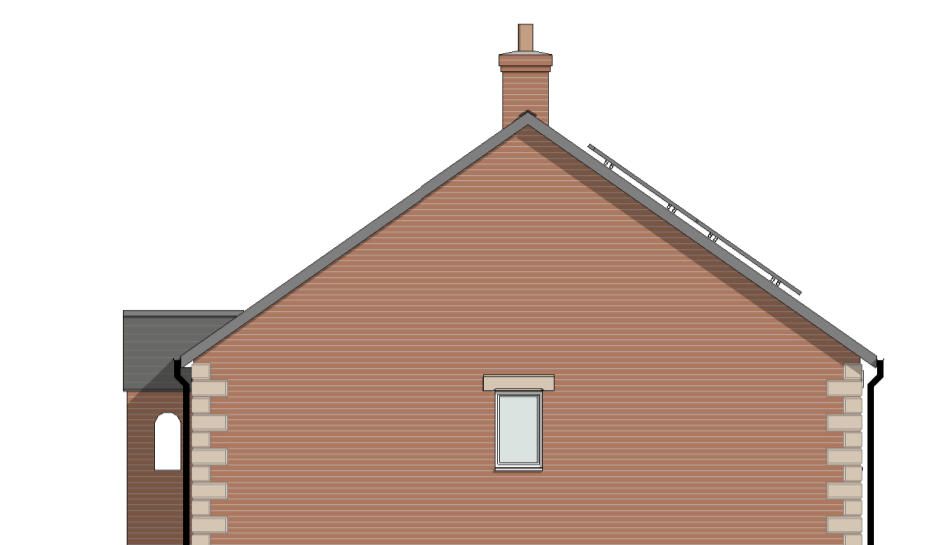
## MATERIAL NOTES

- NATURAL BLUE BLACK SLATE ROOF
- BLUE/ BLACK RIDGE
- STONEMWORK AND MULTISTOCK BRICK WALLS WITH STONE EFFECT QUIONS
- FEATURE BRICK PORCH
- RED BRICK AND STONE EFFECT LINTOLS
- WHITE UPVC WINDOWS ON SLATE CILLS
- BLACK UPVC GUTTERS AND DOWNPIPES
- BLACK FASCIAS AND SOFFITS



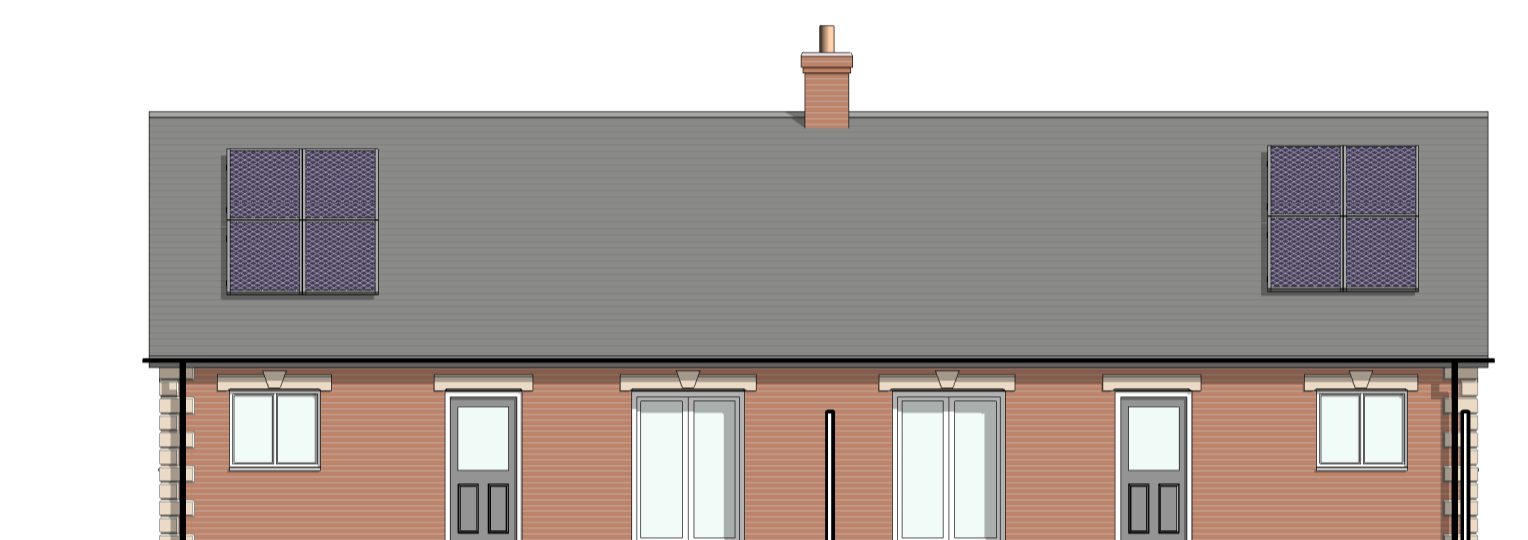
Front Elevation

1 : 100  
0 5m



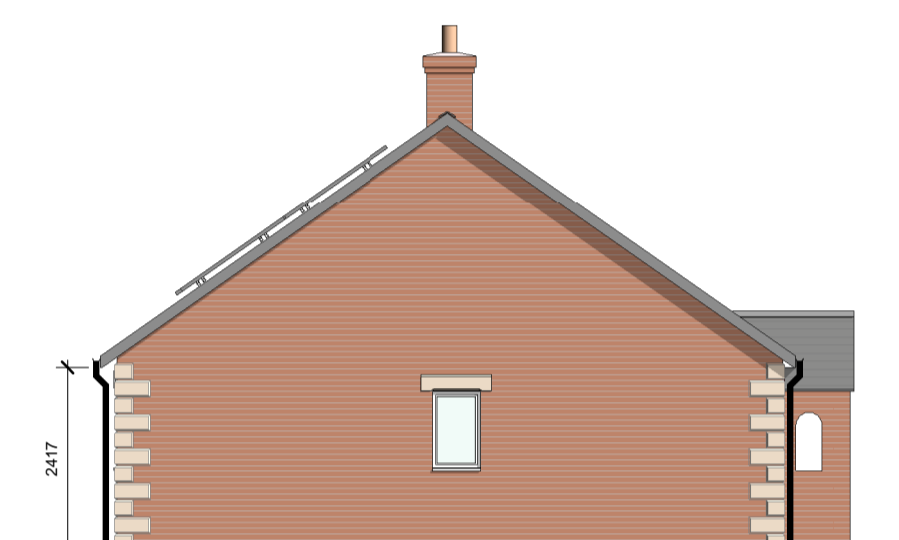
Side Elevation

1 : 100  
0 5m



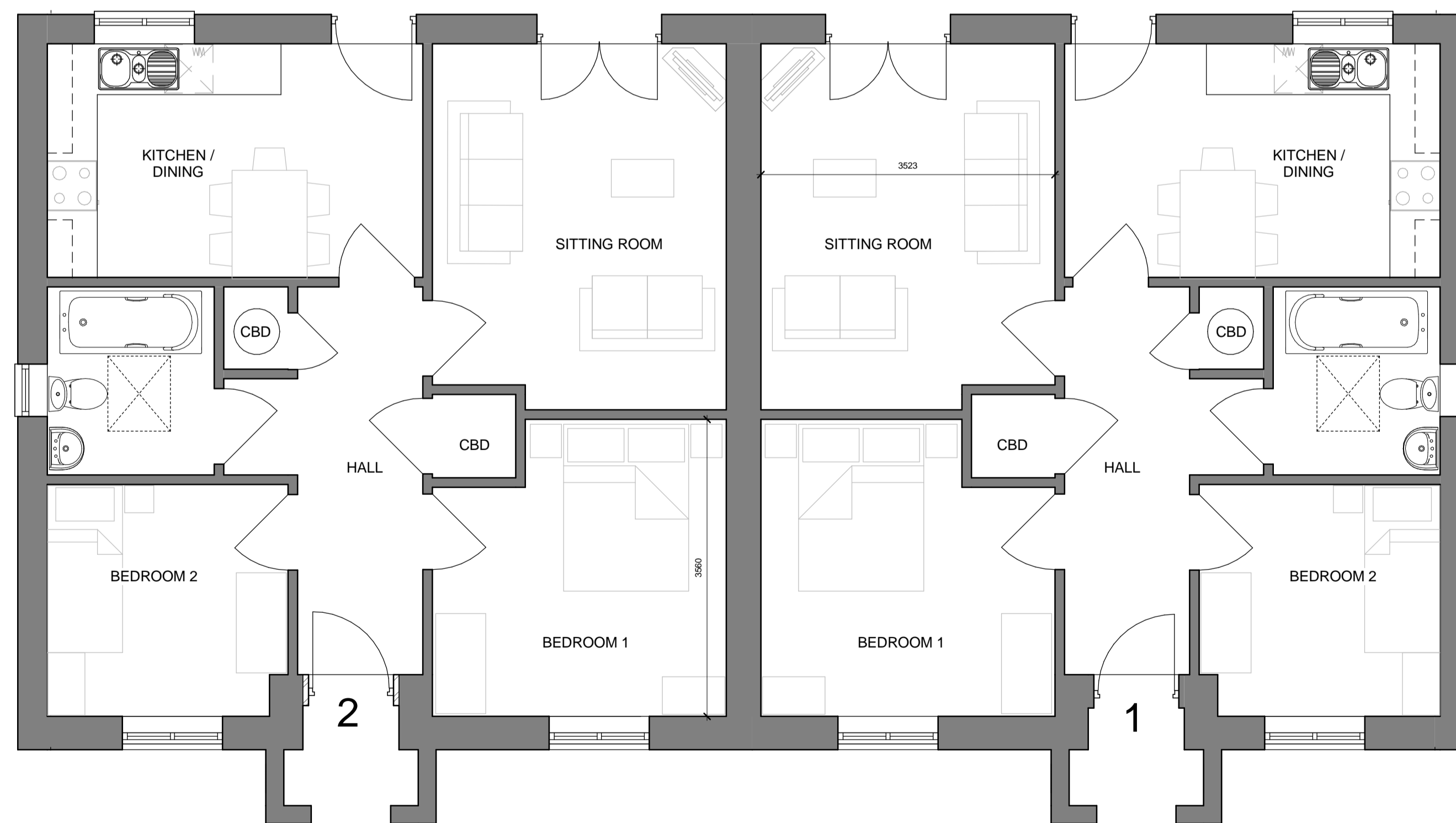
Rear Elevation

1 : 100  
0 5m



End Elevation

1 : 100  
0 5m



Ground Floor Plan

1 : 50  
0 2m

## Floor Area (GIFA)

Plot 1 - 64.63m<sup>2</sup>  
Plot 2 - 64.63m<sup>2</sup>

## Drawing title

Proposed - Floor Plans and Elevations Plots 1 and 2

## Job title

Proposed Affordable Housing Development  
Netherhay Lane,  
DRIMPTON

## Client

Boardwindsor CLT

Stage	Planning	Drawing number	7446 10-005
Scale @ A1	As indicated	Revision	D
Date	14-02-18	Checked by	MSP
Drawn by	BPS	Checked by	MSP

Revision	Description	Date	Initials
A	Comments from meeting 20.02.18	14.03.18	BPS
B	Comments from meeting 20.03.18	22.03.18	BPS
C	Material Colours	27.03.18	BPS
D	Planning Issue	24.04.19	BPS